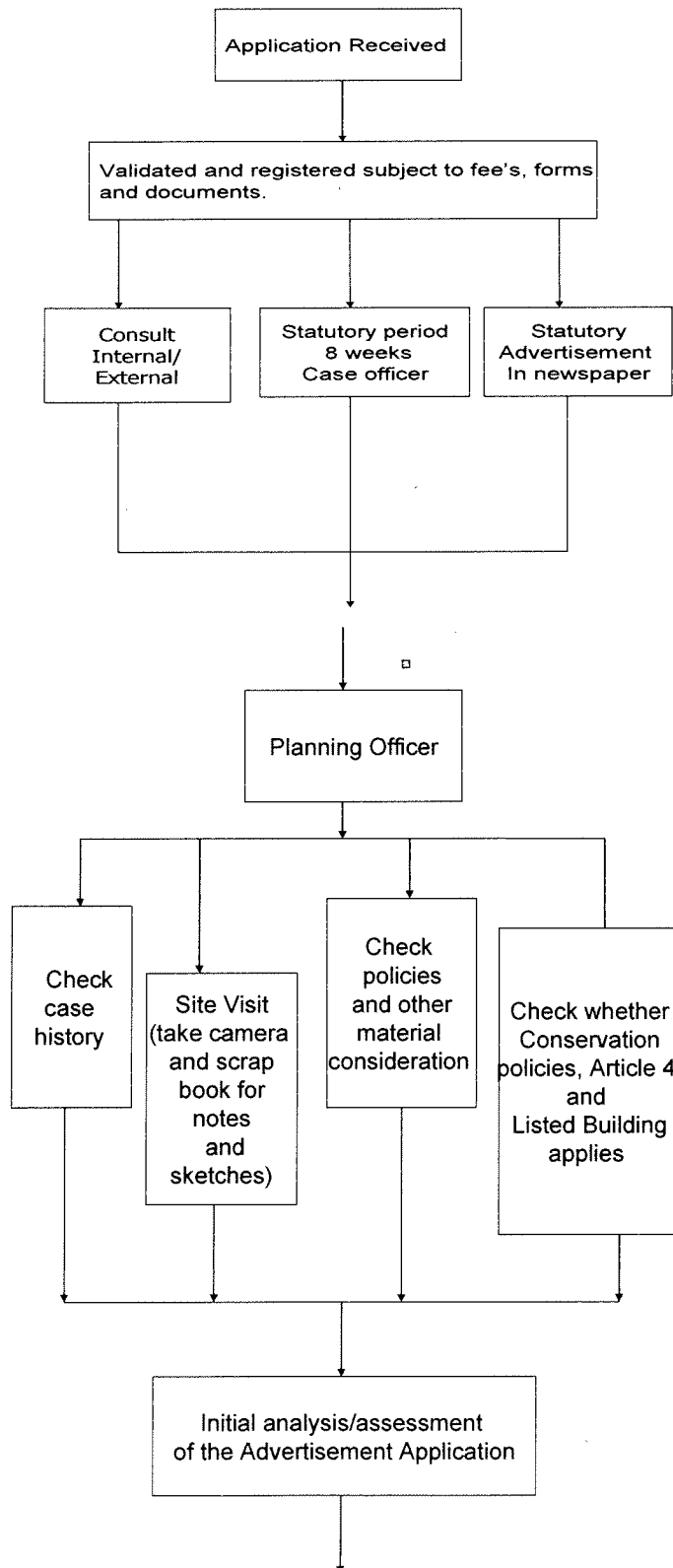
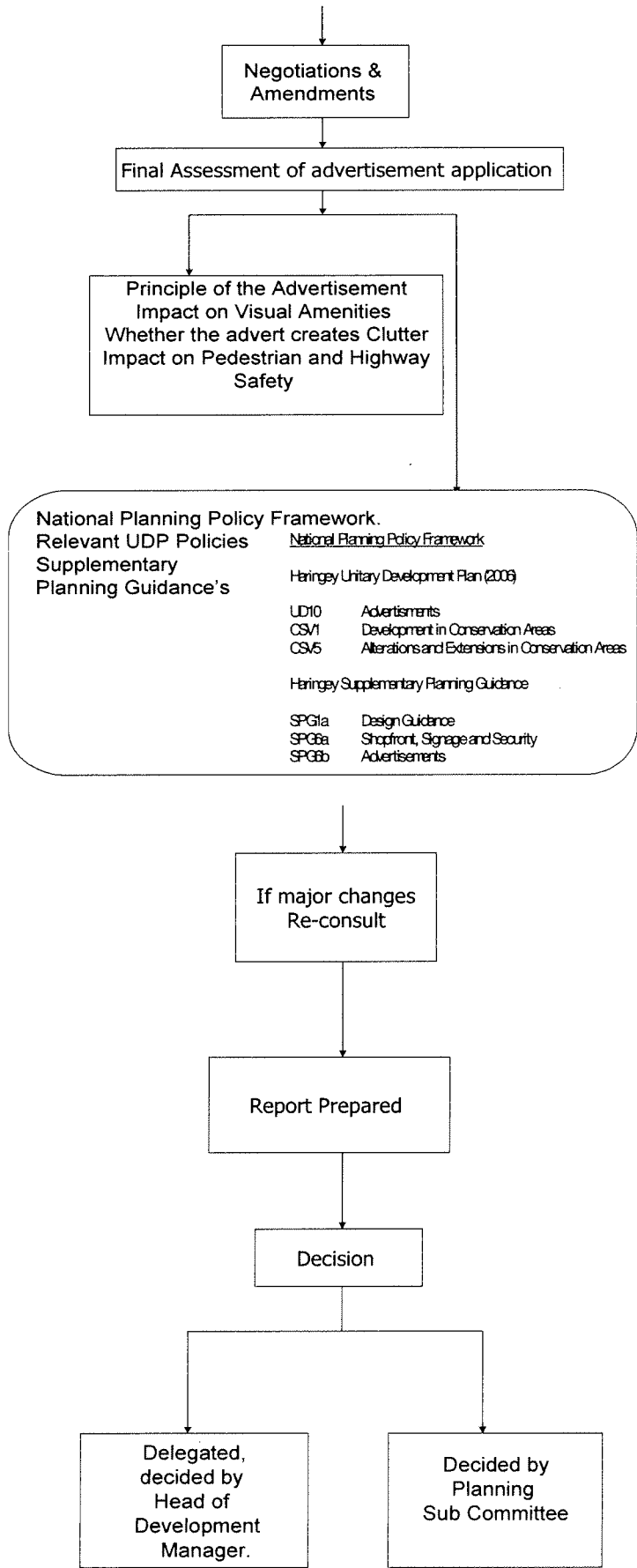


Appendix 2

Flowchart for making an application for Advertisement Consent





Advertisements and Signs

•Town & Country Planning (Control of Advertisements) (England) Regulations 2007.

The Advertisement Regulations covers a wide range of advertisements and signs including:

Posters & notices
Placards & boards
Fascia signs & projecting signs
Estate agents boards
Pole signs & canopy signs
Flag adverts
Traffic signs

Advertisements and Signs Classes of advertisement benefiting from deemed consent

Advertisements displayed inside a building. These advertisements must not be illuminated or displayed within one metre of any window or other external opening through which they can be seen from outside the building



Classes of advertisement benefiting from deemed consent

The rules enable certain 'specified classes' of advertisement to be displayed without application being made to the planning authority. There are 16 such classes of outdoor advertisement, each with its own particular conditions.

Advertisements and Signs

Classes of advertisement

Class 1 : 'functional advertisements' by public bodies



Class 2: miscellaneous advertisements on any premises

Class 3: Temporary Advertisements

Class 4: illuminated advertisements

Class 5: advertisements on business premises

Class 6: advertisements on forecourts of business premises

Class 7: flag advertisements

Class 8: advertisements on hoardings around temporary construction sites

Advertisements and Signs

Class 9: advertisements displayed on purpose-designed highway structures



Class 10: properly authorised signs for approved Neighbourhood Watch and similar schemes

Class 11: directional advertisements



Class 12: advertisements displayed inside buildings

Class 13: advertisements on sites used for the preceding ten years for displaying advertisements.

Class 14: advertisements displayed after the expiry of express consent.

Class 15: Captive balloons advertisements

Class 16: advertisements on telephone kiosks